

# 80 M Street SE

## WiredScore Fact Sheet



Certification  
**WiredScore**

Expiration date  
**July 17, 2026**

Building size  
**285000 sqft**

Building address  
**80 M Street SE, 80 M Street Southeast,  
Washington, District of Columbia,  
20003, United States**

### 80 M Street SE is a WiredScore Silver building

Being a WiredScore Silver building means that 80 M Street SE has been designed with the connectivity needs of occupiers in mind. Fiber connectivity is available nearby which allows occupiers to access high-speed internet. Robust infrastructure will ensure connectivity is protected and secure.



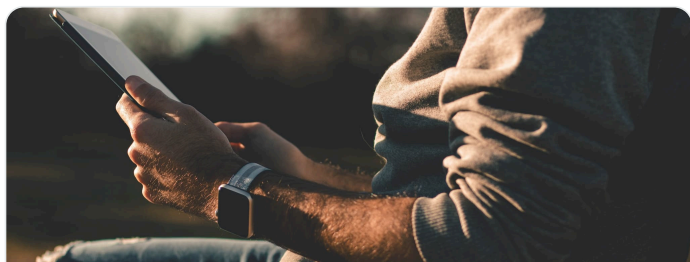
**WiredScore**  
**SILVER**

1 of 34 WiredScore buildings in Washington

## An overview of the experience at 80 M Street SE

Category	Your experience at 80 M Street SE	Regular building experience
 Mobile and Internet	Enjoy excellent connectivity throughout the building, powered by high-quality fiber infrastructure.	Expect frustrating interruptions and dead zones as you move throughout the building due to patchy digital connectivity.
 Set-up	Setting up internet access is effortless for you with multiple high-speed internet providers to choose from, giving you the flexibility to select the provider that best meets your needs, ensuring you can get online quickly and without hassle.	Experience a tedious and slow process to setup your internet connection.
 Future-ready	To ensure that your needs are met both now and in the future, the building is equipped with spare capacity in the telecommunications room. This ensures the building can accommodate new and emerging technologies, providing you with the flexibility and adaptability you require.	Risk future problems arising from an internet connection and mobile connectivity that can't keep up with your growing needs.
 Resiliency	You can rely on consistent connectivity as the building features a secure riser and telecommunications room, minimizing the risk of internet outages.	Experience frequent productivity loss and general frustration resulting from your vulnerable, and poorly secured internet infrastructure.

## Connected building highlights at 80 M Street SE



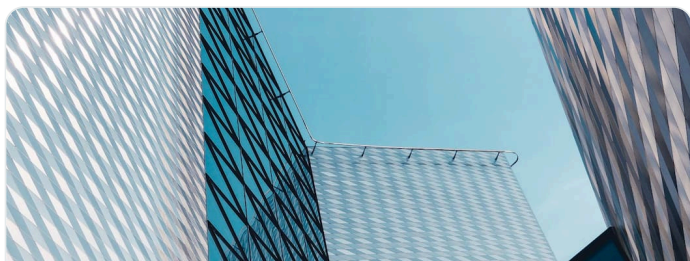
### Mobile and Internet

- Free Wi-Fi in amenity areas allows you to be connected throughout the building.
- Easily install fixed wireless, satellite and mobile equipment with dedicated space and cable pathways to risers on the rooftop.



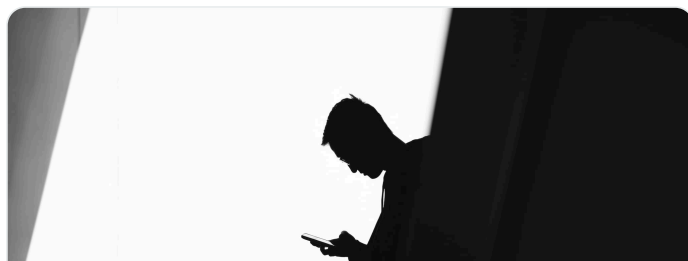
### Set-up

- Install times are minimised with ISP connection points present across the floors of the building.
- Easier service installation enabled by spare capacity within the below-ground telecommunications cable pathway.
- Secure access to risers on each floor prevents unauthorized access and accelerates the installation of connectivity services.
- Protected routing enabled by a top-to-bottom riser expedites the installation process.
- Capacity in risers enables fast installations of new connectivity services.



### Future-ready

- New internet service providers can be installed quickly with available space in the telecommunications room.
- Signed ISP agreements are available to streamline new connections.
- Standardized ISP agreements are available to streamline new connections.



### Resiliency

- Your connection is safeguarded by a secure and dedicated telecommunications room.
- A climate controlled telecommunication room protects your equipment from overheating and condensation.
- Connectivity infrastructure in the telecommunications room is protected from flooding.
- An audit of the telecommunications installation verifies best practices are followed.

## What are the Internet service providers (ISP) within the building?

Name of provider	Provider type	Intake	Location	Riser	Full distribution
Verizon	Fiber - Primary	POE 1 - Cushing Place SE	P1 Level - Telephone Room	Riser 1 - Telephone Riser	Yes
Comcast Business	Fiber - Primary	POE 1 - Cushing Place SE	P1 Level - Telephone Room	Riser 1 - Telephone Riser	Yes
Comcast Business	Copper/Coaxial	POE 1 - Cushing Place SE	P1 Level - Telephone Room	Riser 1 - Telephone Riser	Yes
Atlantech Online	Fiber - Secondary	POE 1 - Cushing Place SE	7th Floor - Telephone Riser Closet	Riser 1 - Telephone Riser	No

## What is WiredScore?

WiredScore certification is the global standard for digital connectivity, recognizing and promoting best-in-class digitally connected buildings across the globe. Being certified by WiredScore demonstrates the building has gone through rigorous 3rd party verification.

**4000+**

certified buildings

**8m+**

people in WiredScore certified buildings

**800m+**

certified square feet

**160+**

cities across the globe